

## SMG FG-42 II Blank Adapter with Variable Safety Orifice

I'm making this information publicly and freely available for the reenacting community. This information is available under the Creative Commons Copyright - [Attribution-NonCommercial-ShareAlike](https://creativecommons.org/licenses/by-nc-sa/4.0/) CC BY-NC-SA . The copyright terms are simple:

- **Attribution** — You must attribute the work with attribution to the author: David Kumhyr.
- **Noncommercial** — You may not use this work for commercial purposes.
- **Share Alike** — If you alter, transform, or build upon this work, you may distribute the resulting work only under the same or similar license to this one.

This blank adapter will enable you to use blanks in your SMG FG-42 II reliably. The orifice – set screw is placed inside the adapter so it cannot become a projectile. The adapter itself is smaller than the opening of the FG-42 flash hider so it cannot become a projectile either.

The SMG FG-42 II action is highly sensitive to gas pressure, just a bit too much and the action will overdrive the round and push it into the chamber face too little it won't cycle properly. The [Atlantic Wall Red Tip 8mm](#) (8x57) full length blank (which are very consistent loads) an orifice of .128" (#30) is correct and will cycle the action correctly.

### SMG FG-42 II Blank Adapter with variable safety orifice

© 2012 by David Kumhyr

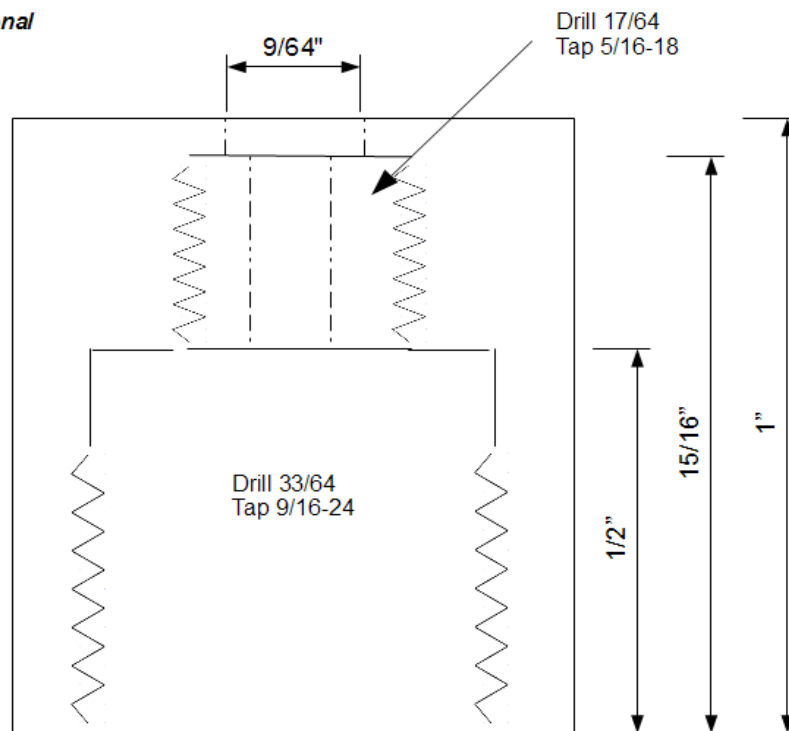


*All dimensions inch fractional*

**Materials:**

- 12L14 Carbon steel rod 1" x 3/4"
- 5/16-18 x 3/4 Set screw

**Note:** Anneal and drill set screw .128 (#30) and re-harden.



Copyright 2012 by David Kumhyr  
Licensed under Attribution-NonCommercial-ShareAlike  
CC BY-NC-SA

If you can't or don't want to do the machining yourself, contact [feldwebel@fallschirmjager.net](mailto:feldwebel@fallschirmjager.net)